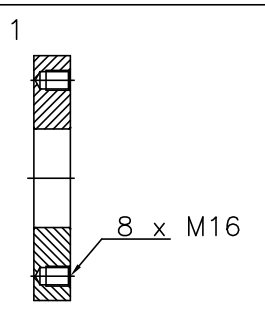
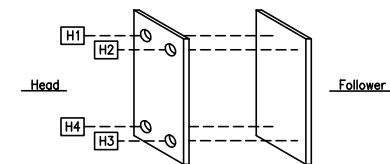


Connections			Description
Fig.	Pos	Dimension	
1	H1	NW80 Flange (Studded) Carbon Steel ND10/16 DIN 2501	WATER (Hot) inlet
1	H4	NW80 Flange (Studded) Carbon Steel ND10/16 DIN 2501	WATER (Hot) outlet
1	H3	NW80 Flange (Studded) Carbon Steel ND10/16 DIN 2501	WATER (Cold) inlet
1	H2	NW80 Flange (Studded) Carbon Steel ND10/16 DIN 2501	WATER (Cold) outlet

General tolerance for foundation length measures ± 10 mm



APV Gdańsk, ul. Chwaszczyńska 6

Address
Country
Tel.: Phone
Fax: Fax

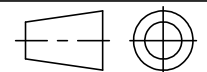
Weight kg: 389
Drawn by:
Checked by:
Approved by:
TGH0V02 Not to Scale
Archive

PHE Type N35 MG-16H/3

MS61725/3 (S) UNCONTROLLED COPY



Design press.: 1600.0 kPa
Basis nr.:



Drawing No.:

Rev.

0